

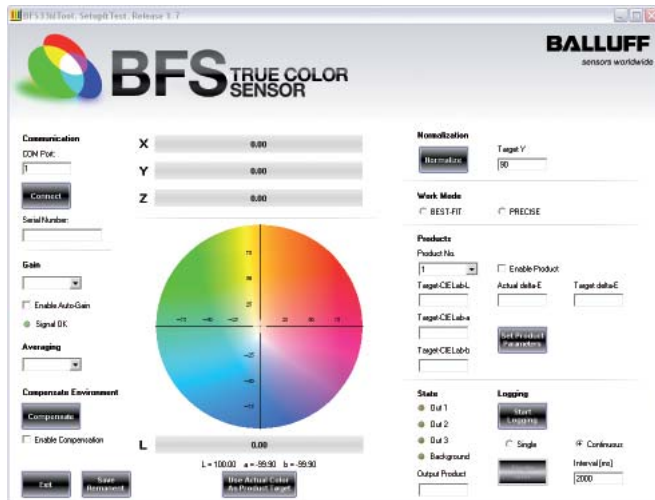


True Color Sensor BFS 33M For distinguishing between the smallest of color nuances

If your application requires reliable detection of different colors or the ability to distinguish various color shades, Balluff's True Color sensor is the solution. Utilizing a pulsed white light source the sensor compares the reflected RGB values to the values stored in the sensor. If the values are within the range you selected the output is turned on. Seven channels with three discrete outputs will meet the most demanding applications.

Features

- Robust metal housing
- Seven channels (3 discrete outputs)
- Ranges up to 400 mm
- Fiber optic cable for space limited applications
- Easy configuration with software



Configuration is easy and intuitive with software. The Lab color values are transmitted via this interface to set the tolerances of the outputs.

Applications

- Color verification of plastic parts
- Detecting polished or unpolished metal
- Presence of components in parts
- Distinguishing color shades

Industries

- Automotive
- Plastics
- Packaging
- Printing



Ordering code	Part number	Features
BFS000L	BFS 33M-GSS-FO1-PU-02	True Color Sensor, 7 channels (3 outputs)
BCC0ARP	BCC M313-D259-B0-688-PS034-020	M8 to 9-pin sub D interface cable, 2 meters
BAE009A	US-232A USB/RS232	USB to RS232 interface converter
BFO00FP	BFO D22-XB-LB-EAK-15-SA1-01	Plastic fiber optic cable, M6x14 threaded end, 1 meter
BFO00C4	BFO D22-XB-LB-EAK-15-SA1-02	Plastic fiber optic cable, M6x14 threaded end, 2 meter
BFO00FN	BFO D22-XB-LB-EAK-15-SA1-05	Plastic fiber optic cable, M6x14 threaded end, 5 meter
BAM01U2	BAM LS-F0-002-F	Adjustable optic lens, 10...200 mm range, M6 thread
BAM01PA	BAM LS-F0-001-M6-L	Long range optic lens, 400 mm range, M6 thread
BFO00C9	BFO D22-XB-UB-EAK-15-SA1-02	Plastic fiber optic cable, M4x14 threaded end, 2 meters
BAM00NT	BAM 04-FL-2	Short range optic lens, 7 mm range, M4 thread