

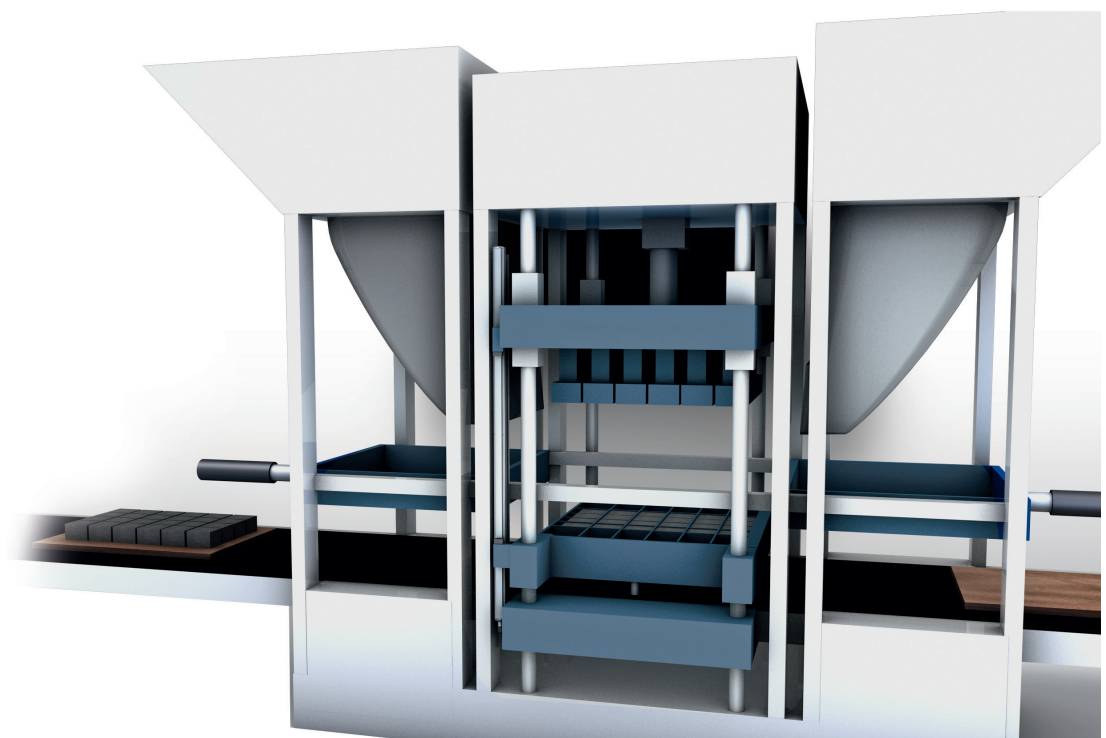
Economical and easy to integrate linear measurement

PROFILE-STYLE TRANSDUCER WITH DIGITAL DPI/IP INTERFACE

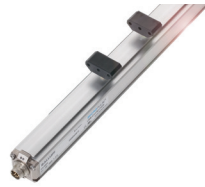
Micropulse position measurement systems in a profile housing are non-contact, absolute measurement systems for accurately measuring one or more measurement paths. The digital DPI/IP pulse interface is compatible with controllers from most manufacturers and ensures reliable signal transmission. These transducers feature rugged construction with a high protection rating, simple installation and a wear-free, highly precise measuring principle. The current axis positions are marked by the position encoder magnets through the wall of the aluminum profile. The transducer systems tolerate a vertical and lateral offset of up to 15 mm. In presses and stamping machines the transducer system measures the axis position of load and mold movement.

Features

- High-accuracy machine positioning with synchronous data transmission and 1 μ m resolution
- Fast, dynamic measuring with up to 4 kHz sampling rate
- Stroke lengths up to 7620 mm
- Non-contact and wear-free, insensitive to contamination
- Time-saving installation and startup



PROFILE-STYLE TRANSDUCER
WITH DIGITAL DPI/IP INTERFACE



	BTL7-P511 PROFIL
Interface	Digital Pulse Interface (DPI), Integrated Protocol (IP)
Stroke length max.	7620 mm
Repeat accuracy	≤ ±5 µm, (typ. ±2,5 µm)
Sampling rate max.	4280 Hz
Max. number of position encoders	16
Supply voltage	10...30 V DC
Ambient temperature	-40...+85 °C
Sock	150 g
Vibration	20 g
Enclosure rating per IEC 60529	IP67, IP68 for cable version
Housing material	Aluminium
Connection	Cable, connectors: M12 – 8-pin, M16 – 8-pin
Dimensions	35 × 36,8 × 145 mm + stroke length

Ordering example:

BTL7-P511-M _____ **-P-** _____

**Standard
nominal strokes (mm)**

50...7620 mm in
1-mm-increments

Connection

S32 Connectors
S115 Connectors
KA02 PUR cable 2 m
KA05 PUR cable 5 m
KA10 PUR cable 10 m
KA15 PUR cable 15 m

ACCESSORIES



	BAM014H	BAM014Z	BAM014H	
Type	Position encoder, floating Distance 0.1...4 mm	Position encoder, floating Distance 4...8 mm	Position encoder, captive with push rod	

CONNECTORS



	BCC00YF	BCC00YW	BCC0103	BCC010F
Type	M12 female, 8-pin (straight) with 5 m cable PUR (black)	M12 female, 8-pin (right- angle) with 5 m cable PUR (black)	M16 female, 8-pin (straight) with 5 m cable PUR (black)	M16 female, 8-pin (right- angle) with 5 m cable PUR (black)