

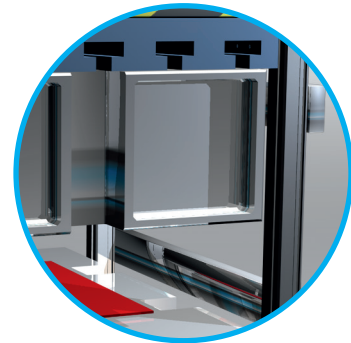
SSI-SYNC – good control behavior and higher dynamics

PROFILE-STYLE TRANSDUCER WITH SSI INTERFACE

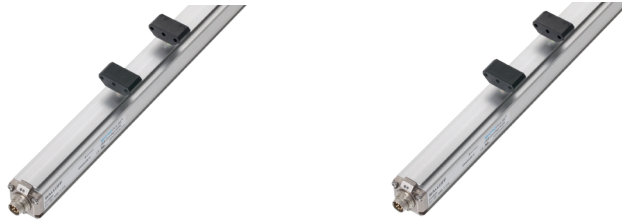
Micropulse position measurement systems in a profile housing are non-contact, absolute measurement systems for accurately measuring one or more measurement paths. The synchronized SSI interface and precise position measurement make the transducer system ideal for use in demanding applications. These include applications with closed-loop axes. Data acquisition in the transducer is synchronized with the external clock of the controller. This enables the controller to perform accurate speed calculations. These transducers feature rugged construction with a high protection rating, simple installation and a wear-free, highly precise measuring principle.

Features

- High-accuracy machine positioning with synchronous data transmission and 1 µm resolution
- Fast, dynamic measuring with up to 4 kHz sampling rate
- Stroke lengths up to 7620 mm
- Non-contact and wear-free, insensitive to contamination
- Time-saving installation and startup



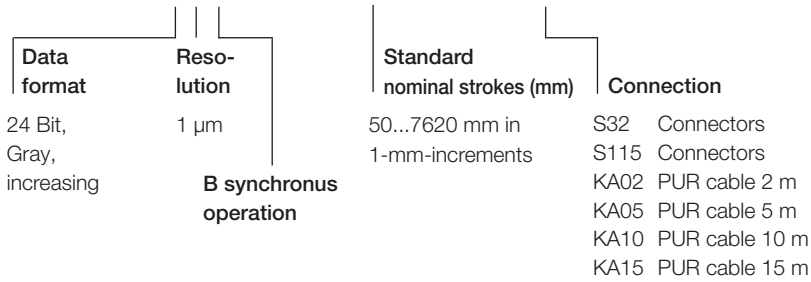
PROFILE-STYLE TRANSDUCER
WITH SSI INTERFACE



	BTL7-S5_ _ – PROFILE	BTL7-S510 – PROFILE
Interface	Synchronous Serial Interface (SSI)	Synchronous Serial Interface (SSI)
Configurable		Via software
Stroke length max.	7620 mm	7620 mm
Resolution max.	0.5 µm	0.5 µm
Repeat accuracy	≤ ±5 µm, (typ. ±2.5 µm)	≤ ±5 µm, (typ. ±2.5 µm)
Sampling rate max.	4280 Hz	4280 Hz
Max. number of position encoders	1	2
Supply voltage	10...30 V DC	10...30 V DC
Ambient temperature	-40...+85 °C	-40...+85 °C
Shock	150 g	150 g
Vibration	20 g	20 g
Enclosure rating per IEC 60529	IP67, IP68 for cable version	IP67, IP68 for cable version
Housing material	Aluminium	Aluminium
Connection	M12 – 8-polig, M16 – 8-polig	M12 – 8-polig, M16 – 8-polig
Dimensions	35 × 36,8 × 145 mm + stroke length	35 × 36,8 × 145 mm + stroke length

Ordering example:

BTL7-S510B-M **-P-**



ACCESSORIES



	BAM014H	BAM014Z	BAM014H	
Type	Position encoder, floating Distance 0.1...4 mm	Position encoder, floating Distance 4...8 mm	Position encoder, captive with push rod	

CONNECTORS



	BCC00YF	BCC00YW	BCC0103	BCC010F
Type	M12 female, 8-pin (straight) with 5 m cable PUR (black)	M12 female, 8-pin (right- angle) with 5 m cable PUR (black)	M16 female, 8-pin (straight) with 5 m cable PUR (black)	M16 female, 8-pin (right- angle) with 5 m cable PUR (black)